



2015 A YEAR IN REVIEW

REBUILDING HEARTS ONE STEP AT A TIME

2015 ACCOMPLISHMENTS

- Increased fundraising from major events (EmpowerRun 5K, Annual Golf Outing, and Break the Silence ... Unmask the Violence Gala) by 16% to reduce our reliance on government funding (*Thank you!*)
- Evolved the annual Candle Lighting Ceremony to be a collaborative and empowering effort for clients to take their stories “to the streets” and build awareness in the local community
- Partnered with experts to diversify our funding and make A Safe Place exponentially more financially sustainable for the future
- Adopted a Customer Relationship Management system that allows us to use our data more wisely and to reduce overall costs
- Eased the budget burden by reducing additional development staff and asking our Executive Director to assume chief responsibility for fundraising
- Created the “Partnership for Lake County” – a holistic and integrated Human Abuse Network to serve the needs of domestic violence, sexual assault, child abuse, elder abuse and human trafficking under one umbrella
- Submitted a Section 8 housing application to create sustainability for our apartments by generating more than \$150,000 per year
- Completed our second successful year with an Enroll Lake County healthcare navigator, who helps victims obtain medical care for injuries from domestic violence
- Expanded our volunteer training program, with sessions online and in person on weekends and evenings
- Grew our partnership with Lake Forest College by serving as an internship site and bringing volunteer training onto their campus
- Successfully used “challenge grants” to encourage individual donors to give to initiatives that were being matched dollar-for-dollar by a sponsor
- Remodeled and expanded our Teen Room, to provide a comfortable, safe, fun space for friendships, studying and leisure
- Expanded and strengthened our valued partnership with the Chicago Bears, which dates back to 1988

2016 GOALS

- Increase our visibility and partnerships with lawyers, judges, bar associations and legal networks
- Create a La Paloma program for the 30% of our clients who are Hispanic, knowing that such supportive programs at other domestic violence agencies create powerful connections for survivors and attract critical funding
- Embark on a strategic planning initiative to guide our future
- Build upon our initial momentum with the Betty Toser Groups by growing our membership and number of support groups in middle-income and affluent communities, where support for domestic violence often must be sought outside a survivor’s own community
- Construct a playground at our permanent and transitional living facility in Zion, a dream we’ve had for 10 years
- Continue to strengthen and grow our relationship with the Chicago Bears and other large local enterprises for mutual benefit
- Become more entrepreneurial as an organization and continue to diversify our funding sources to reduce risks from state and federal budget cuts

DID YOU KNOW?

In 2014, four women in Lake County, Illinois, lost their lives in domestic violence-related homicides. Most of these victims lived in middle- and upper-class communities.

Together, we can eradicate such horrifying statistics.



REFLECTIONS ON A YEAR OF HEALING

In 2015, we were there. There to help 13,635 people when they needed us most. There to answer 2,833 calls to our crisis line. There when 188 victims of domestic violence needed emergency shelter. There to guide 2,436 courageous survivors through the court-room experience of requesting an order of protection. There when 188 children needed a safe, supervised way to visit their parents. And there to prevent violence by providing education to 8,159 people in the community.

When we were needed, we were there.

We were there because you were there. Without the generous support of donors like you, the calls would go unanswered. The shelter doors would close. The victims in court rooms would face the system – and even their abusers – without someone to hold their hands. The abusers themselves would never get the interventions they need to stop the cycle of violence. And the children who have witnessed and endured the trauma of domestic violence would be lost to a world that expects them to simply carry on as if their lives have not been shattered.

At A Safe Place, we are able to transform lives after domestic violence and to rebuild the hearts of thousands of survivors, at every stage of their healing, only because of the compassion of individuals like you and organizations like yours. We are humbled and grateful, and we beseech you to continue your generous support.

As you will see in this Annual Report, 2015 was a year in which the demand for our services continued to rise while a budget crisis in the State of Illinois left us scrambling for enough dollars to stay afloat. We were forced to cut back our life-affirming counseling services – a difficult decision that allowed us to meet the demands of the Crisis & Safety stage of domestic violence response (see page 3 for illustration of the full continuum of care), but that put sufferers of post-traumatic stress at increased danger of flashbacks, debilitating symptoms and even suicide. Our own hearts were broken by the need to make such a difficult tradeoff in the face of declining funds. Miraculously, in the month of December, we were blessed to receive a few very large gifts, including estate gifts, which saved us from further sacrifices to the critical services we offer.

Despite the challenges of a difficult year, we never wavered in our commitment to helping victims of domestic violence find hope and rebuild their once devastated lives. Together, we intend to do even more in 2016.

Every dollar counts, and every donor matters.

On behalf of the courageous adults and children in our community, who are getting stronger at every stage of their healing, we **thank you** for all you do.



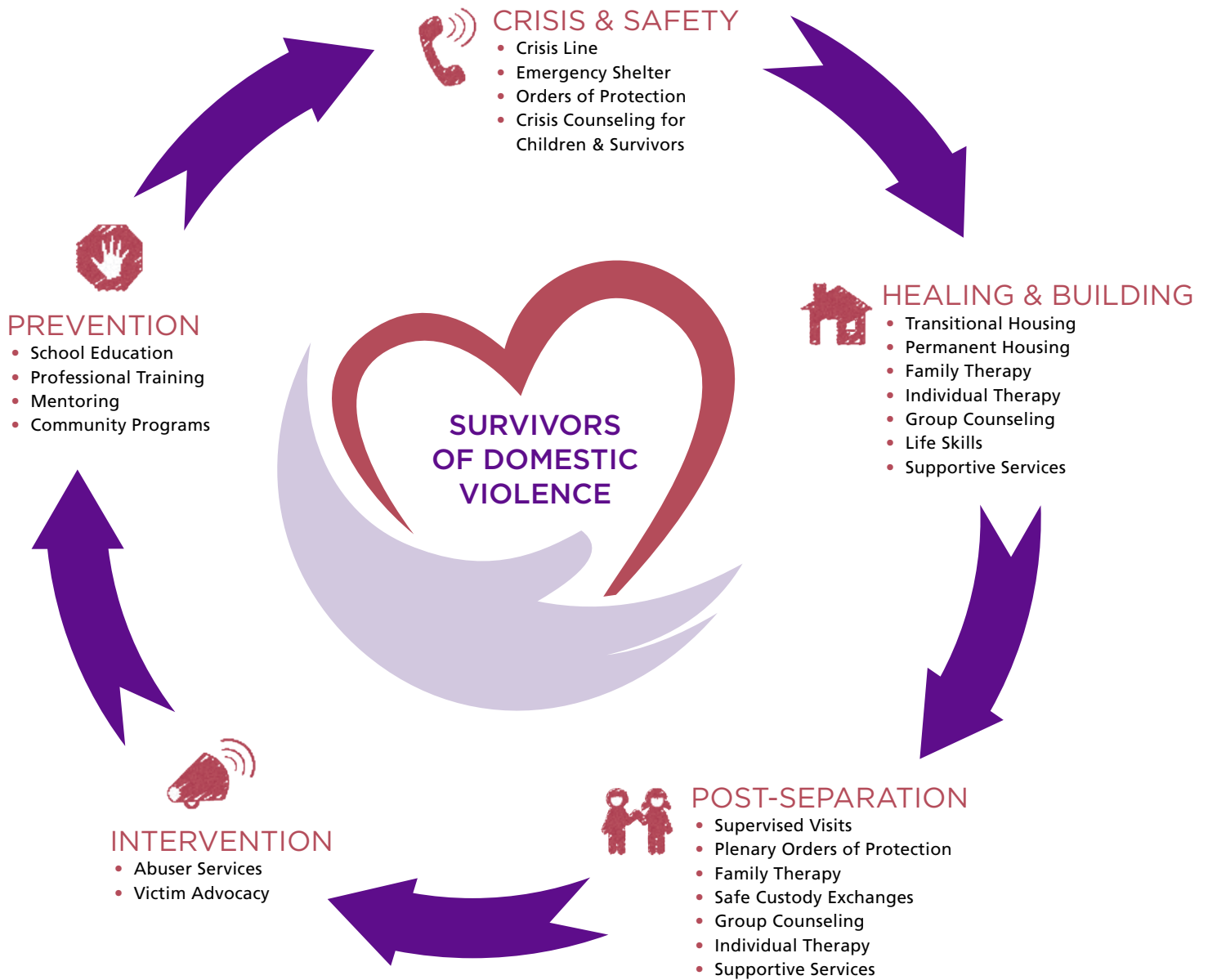
Karen Szymanski
Board President



Pat Davenport
Executive Director



REBUILDING HEARTS ONE STEP AT A TIME



YOUR SUPPORT ENSURES WE CAN CONTINUE TO CARE FOR OUR SURVIVORS EVERY STEP OF THE WAY

FISCAL YEAR 2015 AT A GLANCE



HEARTS REACHED

13,635 People Served and Impacted by Our Mission



24-HOUR CRISIS LINE

2,833 Callers
(10% increase from 2014)



EMERGENCY SHELTER

188 Victims Sheltered
7,233 Shelter Nights



SUPERVISED FAMILY VISITATIONS

188 Children Had Safe Family Visits
1,403 Custody Exchanges
1,194 Family Visitations



HOUSING ASSISTANCE

41,355 Nights of Safe Housing
(15% increase from 2014)



LEGAL ADVOCACY

3,001 Orders of Protection
(16% increase from 2014)



PREVENTION & EDUCATION

2,648 Teens Received Education on Healthy Relationships
8,159 People Attended Domestic Violence Presentations



COUNSELING

558 Adults Received Life-Changing Counseling
158 Children Received Therapeutic Healing

Note: 37% decrease in services due to budget constraints



1 in 4 women



1 in 7 men

in the United States will be victims of severe physical violence by an intimate partner in their lifetimes.

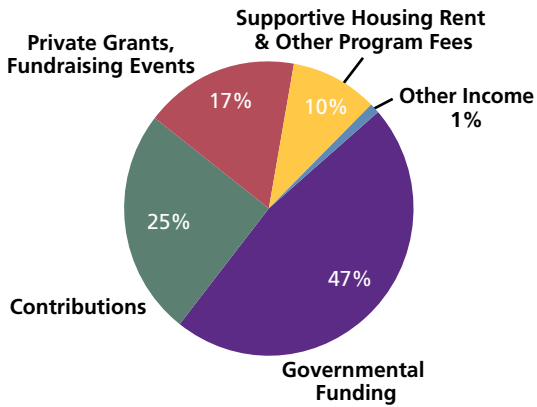


A staggering 88,000 women and 50,000 men in Lake County alone will be victims at some point in their lives, and as many as 60,497 children in Lake County will witness domestic abuse.

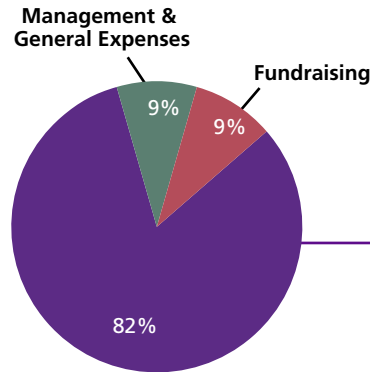


CONSOLIDATED STATEMENT OF 2015 ACTIVITIES

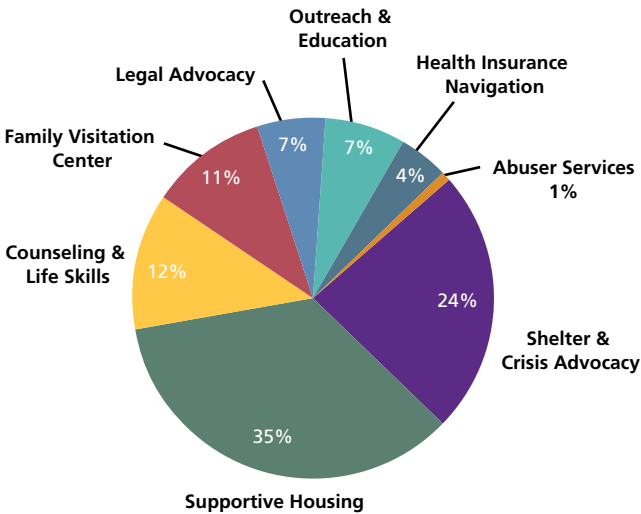
REVENUE



EXPENSES



DOMESTIC VIOLENCE PREVENTION & TREATMENT PROGRAMS



A SAFE PLACE'S MISSION & VISION

As the leading advocate for eliminating domestic violence in northern Illinois, A Safe Place provides emergency shelter, affordable housing, advocacy, and individual and group supportive services to survivors of domestic violence and their children; and intervention services for abusers to learn accountability for their choices and actions. A Safe Place also presents educational programs to professionals to build awareness of domestic violence, to students in classrooms and to the community at large. It is our goal that by helping others learn more about domestic violence, its causes, and appropriate responses, we can encourage a comprehensive response to the domestic violence in our midst, breaking the cycle of violence and creating safe and healthy communities.



FINANCIAL SUMMARY (FOR THE FISCAL YEAR ENDING JUNE 30, 2015)

SUPPORT & REVENUE

Governmental Funding	\$1,250,611
Contributions	671,318
Private Grants, Fundraising Events	456,431
Supportive Housing Rent & Other Program Fees	255,442
Other Income	28,420
Total Support and Revenue	\$2,662,222

EXPENSES

Shelter & Crisis Advocacy	\$537,226
Supportive Housing	793,872
Counseling & Life Skills	276,600
Family Visitation Center	239,117
Legal Advocacy	134,006
Outreach & Education	162,630
Abuser Services	100,989
Health Insurance Navigation	17,469
Total Domestic Violence Prevention and Treatment Programs	\$2,261,909

Management and General Expenses	\$242,704
Fundraising	247,137
Total Management, General Expenses and Fundraising	\$489,841
Total Expenses¹	\$2,751,750

CONSOLIDATED STATEMENT OF FINANCIAL POSITION

ASSETS, LIABILITY & NET ASSET SUMMARY

Cash and Short-Term Investments	\$49,220
Grants and Contributions Receivable	344,082
Prepaid and Other Current Assets	37,700
Restricted Deposits, Reserves, Deferred Financing Costs and Investments	745,932
Land, Building, Furniture and Equipment (net of depreciation)	9,679,080
Total Assets	\$10,856,014

EXPENSES

Accounts Payable and Accrued Expenses	\$245,071
Notes and Mortgages Payable	3,527,450
Total Liabilities	\$3,772,521

Net Assets, Unrestricted	\$3,299,933
Net Assets, Temporarily Restricted	243,502
Noncontrolling Interests in A Safe Place LLP	3,540,058
Total Liabilities and Net Assets	\$10,856,014²

¹Expenses include \$493,713 (2015) of non-cash depreciation and amortization. ²Note: The above financial summary is derived from the 2015 consolidated financial statements that have been audited and have received an unqualified opinion, the highest mark an organization can receive. Activities for which A Safe Place serves only as fiscal agent have been excluded. For complete, audited, consolidated financial statements, please contact our administrative offices at 847-731-7165.

2015 MAJOR DONORS

\$50,000+

Chicago Bears
Designs for Dignity
Healthcare Foundation of
Northern Lake County
Hermitage Family Foundation

\$25,000 - \$49,999

Alphawood Foundation
Trustmark Foundation
United Way of Lake County

\$10,000 - \$24,999

AbbVie Foundation
Anonymous
Chicago Foundation for Women
Alverin M. Cornell Foundation
First Presbyterian Church of Lake Forest
Grant Healthcare Foundation
Judy Family Foundation
Lake County Community Foundation
Michael & Andrea Rosengarden
Betty Toser Memorial Fund

\$5,000 - \$9,999

Abbott Fund
Robert Ackley
Anonymous
Autohaus on Edens, Inc.
Buchanan Family Fund
Circle of Service Foundation
Coldwell Banker Charitable Foundation
Patrick and Anna M. Cudahy Fund
Discover Financial Services
George M. Eisenberg Foundation
for Charities
First Presbyterian Church of Libertyville
Forest & Found Ltd.
Lake County Bar Foundation
Matthew Matias & Tami Pilot-Matias
Eugene & Bonnie Minsky
Frank & Jean Mohr
Northbrook Toyota
Paragon Asset Recovery
Reichert Foundation
Ernest & Dawn Rogers
Uline, Inc.
United Conveyor Foundation
Tom and Marie Wascoe
YWCA of Lake Forest & Lake Bluff
Zurich U.S. Foundation

\$1,000 - \$4,999

The Allstate Foundation
American Center for Spine
and Neurosurgery
David & Patty Anderskow
Bill Anest Family Foundation
Peter and Thalia Anest
Family Foundation
Anonymous
Aon Risk Solutions
Julio Argueta
AT&T
Logan Ayers
Stuart & Nancy Babendir
Baird & Warner Goodwill Network
Bank of America
Robert Boyle & Jennifer Diehl
Brown & Joseph, Ltd.
Andrew & Melinda Bush
The Cable Company
Calpine Zion Energy
Paula Carballido
Caring Women's Connection
Chicago Foundation for Women
Paula Clayton-Lenczycki
Sonia Cohen
Convergent Technologies, LLC
Colleen & Brad Cramlet
Crowe Horwath LLP
Carl & Lora DeMasi
Patricia Dihel
Marlene Domash
John & Laurie Dyke
EEG, Inc.
David & Lisette Eisendrath Foundation
Exchange Club of Gurnee
Dennis Falletti
First Look for Charity
First Midwest Bank
First Presbyterian Church
of Highland Park
MaryKay Foy
Kimberly J. Gonzales
Armin & Esther Hirsch Foundation
Ellen Hyndman
JBS Foundation
Joseph & Catherine Johnson
Family Foundation
Keystone Aniline Corporation
Kim & Maureen Klatt
Carol Knop
Kol Hadash Humanistic Congregation
Joseph & Susan Kosinski
Lake Forest College
Chris Larson
Learsi & Co. Inc.
Lee Family Foundation
Ron & Nancy Liace

Libertyville Bank & Trust
Libertyville Junior Women's Club
Make It Better
John Marshall Family Foundation
Laurence & Leslie Marx
Thomas & Kathryn Miceli
Jack Miller Family Foundation
Molly Maid (Highland Park)
Ms. Molly Foundation
Nielsen-Massey Vanillas
North Shore Chapter Women's
Council of Realtors
Nancy O'Connor
Cheryl A. & John M. O'Meara
Charitable Foundation, Inc.
Robert P. & Mary Kay O'Meara
Family Foundation
Packaging Corporation of America
The William and Wilma Paterson
Foundation
Herman & Katherine Peters Foundation
Power Construction
R & R Crossing
Jude & Kathy Rake
Colleen Roback
Mark Saran
Steve & Cheryl Scott
Stoddard Silencers, Inc.
Charlie & Kelly Sweat
Karen Szymanski
Ildiko Todorovic
Thomas F. Toser
Toyota Dealer Match Program
Toyota Financial Services
VW Credit, Inc.
Daniel Weinkauff
Ronald & Nancy Wick
Charlie Wilkinson & Ingrid Weimer
Anna Jean & the late Eugene Woroch
Craig Zebold
Zurich North America



For a complete list of donors, visit www.ASafePlaceForHelp.org.

A Safe Place • 2710 17th Street, Zion, IL 60099 • 847-731-7165 • www.ASafePlaceForHelp.org